

# MONTHLY MEMBERSHIP PROGRESS REPORT

LOCATION INDIA

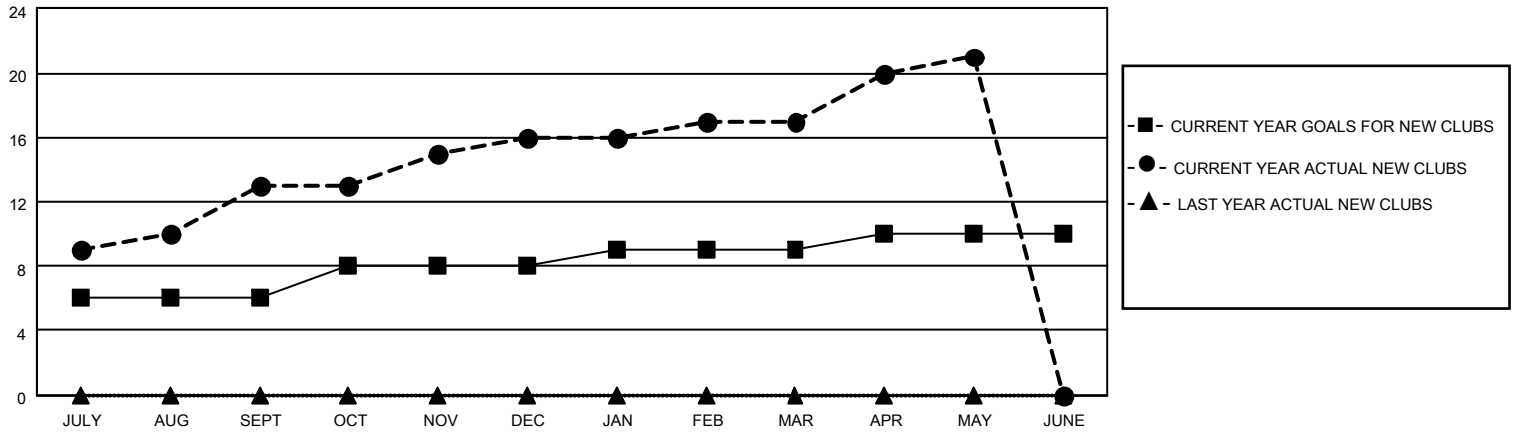
District 324 F

Results as of: 5/31/2022

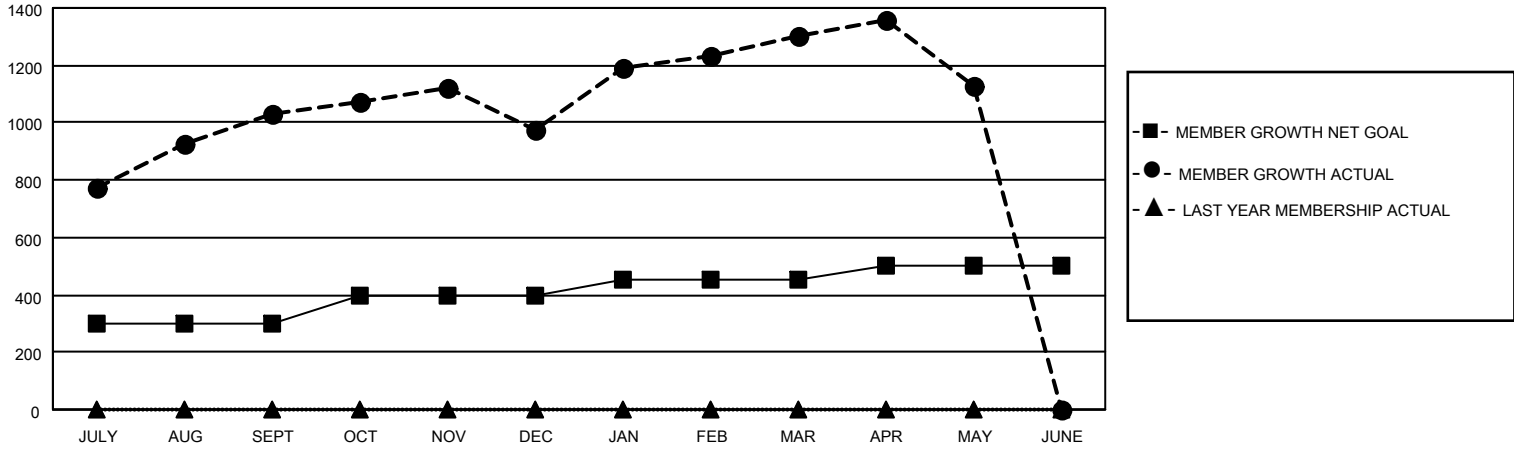
Clubs			
RESULTS FOR 2021-2022			
QUARTER	NEW CLUB GOAL	NEW CLUBS	DROPPED CLUBS
JULY/AUG/SEPT	6	13	0
OCT/NOV/DEC	2	3	3
JAN/FEB/MAR	1	1	1
APR/MAY/JUNE	1	4	0

Members			
RESULTS FOR 2021-2022			
QUARTER	MEMBER GROWTH NET GOAL	MEMBER GROWTH ACTUAL	DROPPED MEMBERS ACTUAL (including transfers)
JULY/AUG/SEPT	300	1266	194
OCT/NOV/DEC	100	262	312
JAN/FEB/MAR	50	463	76
APR/MAY/JUNE	50	225	383

**GOALS AND ACTUAL NEW CLUBS CUMULATIVE**



**GOALS AND ACTUAL MEMBERS CUMULATIVE**



**DROPPED CLUBS: 4**

215 CLUBS OF 239 ADDED 1 OR MORE NEW MEMBERS

GENDER DISTRIBUTION

MALE	9,196 (87.89%)
FEMALE	1,267 (12.11%)
NON BINARY	0 (0.00%)
PREFER NOT TO ANSWER	0 (0.00%)

DROPPED MEMBERS

[CLICK HERE FOR CUMULATIVE MEMBERSHIP DATA](#)

DECEASED	59
CLUB CANCELLED	90
OTHER	816
<b>TOTAL</b>	<b>965</b>

TOTAL FAMILY UNIT MEMBERS 1,924

FAMILY MEMBERS PAYING HALF DUES 1,102